

# Boyd's Bay Weekly News



May 12, 2014

Ms. Kristi Boyd  
kristi\_boyd@nobl.k12.in.us  
Noble Crossing Elementary  
317-773-2850 ext. 26215

## This Week's Travel Log

*Our learning targets for the week are:*

- I can divide shapes into fractional parts.
- I can identify halves, thirds, fourths, sixths, and eighths.
- I can compare fractional parts.
- I can identify and explain the meanings of numerator and denominator.
- I can use manipulatives to model equivalent fractions.
- I can read and write words with the **syllable pattern V/CV** like **even**, **open**, and **begin**.
- I can read nonfiction texts and learn what the author wants me to know.
- I can identify the following of earth's biomes and name three animals that call it home: ocean, forest, fresh water, tundra, rainforest, desert, and prairie.
- I can state my likes and dislikes and tell why in my writing.

## Our Itinerary

May 12<sup>th</sup> - May 16<sup>th</sup>  
(Red Lunch Menu Week)

Monday: (**D Day**) Technology

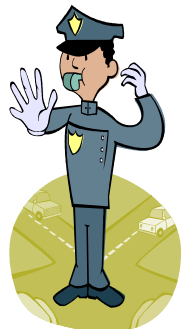
Tuesday (**A Day**) P.E.

Don't forget your sneakers. ☺  
2:30 Mrs. Park Lesson

Wednesday (**B Day**) Music

Thursday (**C Day**) Music  
1:40 Library Checkout

Friday (**D Day**) Art



EXCEL

## This Week's Spelling & Word Wall Words

**Spelling Words:** even, open, begin, baby, tiger, music, paper, zero, table, below, zebra, final

**Enrichment Words:** everyone, unlikely, responsibility

**Words to Know:** across, ball, cried, head, heard, large, should, second

### A Note From Ms. Boyd

Field Day will be held on Friday, May 23<sup>rd</sup>. Grades K and 1 will be outside from 1:30 until 3:10 that day. The theme for the day is Passport to the World and each class will be rotating through stations and playing games children in different countries might play. If you would like to volunteer to help man a station, please visit <http://www.signupgenius.com/go/30E0844A4AB2BAA8-field> and sign up. Any time you can donate would be much appreciated. Thank you! ☺

All Roads Lead  
To Learning!