

Gently Sleep





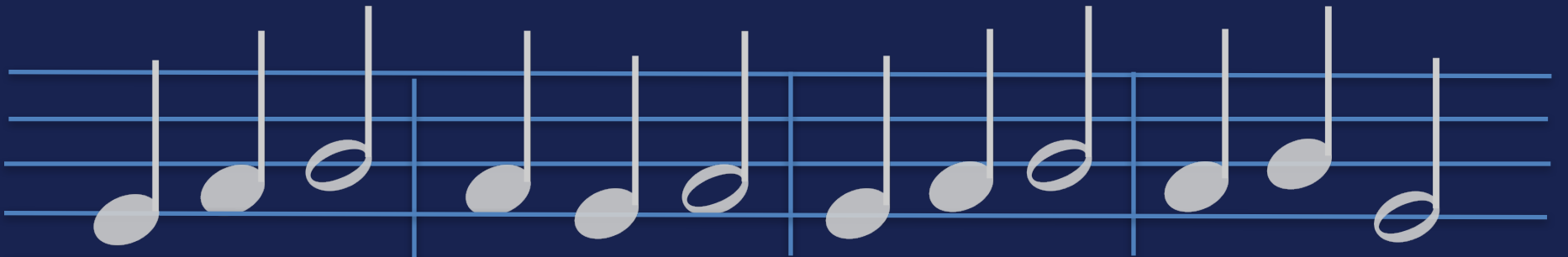
Musical notation for the note B on a green staff. The note is a whole note on the second line of the treble clef. Below the staff, the left hand (LH) fingering is shown with two black dots on the first and second fingers. The right hand (RH) fingering is shown with five white dots on the first, second, third, fourth, and fifth fingers. A large black letter 'B' is positioned to the right of the RH fingering.

Musical notation for the note A on an orange staff. The note is a whole note on the second space of the treble clef. Below the staff, the left hand (LH) fingering is shown with three black dots on the first, second, and third fingers. The right hand (RH) fingering is shown with five white dots on the first, second, third, fourth, and fifth fingers. A large black letter 'A' is positioned to the right of the RH fingering.

Musical notation for the note G on a pink staff. The note is a whole note on the first space of the treble clef. Below the staff, the left hand (LH) fingering is shown with three black dots on the first, second, and third fingers. The right hand (RH) fingering is shown with five white dots on the first, second, third, fourth, and fifth fingers. A large black letter 'G' is positioned to the right of the RH fingering.



G A B A G A G A B A B G



G A B A G A G A B A B G



Gen - tly sleep, rest your head.



LH
RH B

LH
RH A

LH
RH G



Gen - tly sleep, in your bed.



LH
RH B

LH
RH A

LH
RH G



Gen - tly sleep, rest your head.



LH
RH
B

LH
RH
A

LH
RH
G



Gen - tly sleep, night is here.



LH
RH B

LH
RH A

LH
RH G



Gen - tly sleep, rest your head. Gen - tly sleep, in your bed.



LH
RH B

LH
RH A

LH
RH G



Gen - tly sleep, night is near. Gen - tly sleep, night is here.



LH
RH
B

LH
RH
A

LH
RH
G

Gently Sleep



Gen - tly sleep, rest your head. Gen - tly sleep, in your bed.

Gen - tly sleep, night is near. Gen - tly sleep, night is here.



LH
RH
B

LH
RH
A

LH
RH
G